



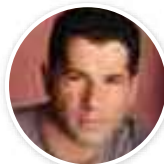
ISEF Foundation Celebrates 40 Years

MK Merav Ben-Ari, herself an ISEF and IDC Herzliya alumna, speaks to students from several universities and colleges, including IDC, at a meeting of ISEF's leadership development program.



The ISEF Foundation provides not only scholarships but also a support network for students throughout their studies.

The ISEF Foundation, which has maintained a strong partnership with IDC Herzliya since 1999, is celebrating 40 years of unflinching commitment to assist gifted but disadvantaged young Israelis through higher education. Founded by **Lily Safra** and the late **Edmond Safra**, together with **Nina Weiner**, who continues to serve as president, the foundation has granted more than 20,000 annual scholarships for undergraduate, graduate and postgraduate studies at respected institutions around the world, including 500 scholarships to IDC students.

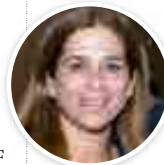


Dr. **Liav Orgad**, a senior lecturer at IDC's Lauder School of Government, Diplomacy & Strategy, received ISEF Foundation support for 12 years, and says he owes the foundation more than he can ever repay. "ISEF is so much more than a scholarship foundation," he says. "It is a family, a network, a foundation for social change, a foundation with a vision for the future of Israeli society. It provides hope and opportunity. I am proud to be an ISEF alumnus and to work at my alma mater, IDC Herzliya

– the two institutions that have had the most significant contribution to my life, personality, and character."



Dr. **Adi Koll**, a former Knesset member who is now IDC's dean of Student Affairs, says, "I owe my education and career to ISEF; I would never have been able to achieve my dream of higher education otherwise."



IDC alumna **Merav Ben-Ari**, an attorney and Knesset member, spoke to students at a meeting of ISEF's leadership development program about the central role IDC and the foundation have played in shaping her identity as a leader of social change. ISEF scholarship recipients work with troubled teens at the Herzliya youth center Through the Waves, one of two centers for at-risk youth established by Ben-Ari.

The ISEF Foundation provides not only scholarships but also a support network for students throughout their studies. In return, students



ISEF founders Lily and the late Edmond Safra with Nina Weiner, president.



From left: Tomer Samarkandi, Merav Ben-Ari, Prof. Amnon Rubinstein, and Nina Weiner.



IDC students and ISEF fellows Sarai Gershon (Communications) and Or Levy (Psychology).



Prof. Uriel Reichman with Nina Weiner.

"I am proud to be an ISEF alumnus and to work at my alma mater, IDC Herzliya – the two institutions that have had the most significant contribution to my life, personality, and character."

– Dr. Liav Orgad, senior lecturer at IDC’s Lauder School of Government, Diplomacy & Strategy



Nina Weiner, Dr. Liav Orgad, Prof. Amnon Rubinstein, and Adv. Guy Busy, an ISEF and IDC alumnus and ISEF Israel board member. Prof. Rubinstein was awarded the “ISEF award for contribution to the Israeli Society”.

contribute to the community, serving as role models and tutoring and mentoring at-risk youth in Israel, and serving as “goodwill ambassadors” to countries in need. The foundation’s early commitment to assist Sephardi immigrants through education has extended to Russian, Ethiopian, and Druze students as well.

ISEF and IDC share the goal of enabling talented young people to reach their fullest potential and

make an impact. “IDC Herzliya is honored to cooperate with the ISEF Foundation and to share the same visions,” says Prof. **Uriel Reichman**, president and founder of IDC. “We look forward to many more years of partnership to promote education and leadership, to help young people achieve their dreams, inspire others, and contribute to Israeli society.” ★

– Dalit Shmueli